

Sustainable Development and Efficient Improvement of the Brazilian Agriculture & Agricultural Sector Communication Needs

Xico Graziano
Nov. 18th, 2019



5 Key Questions about AGRO in Brazil



Xico Graziano

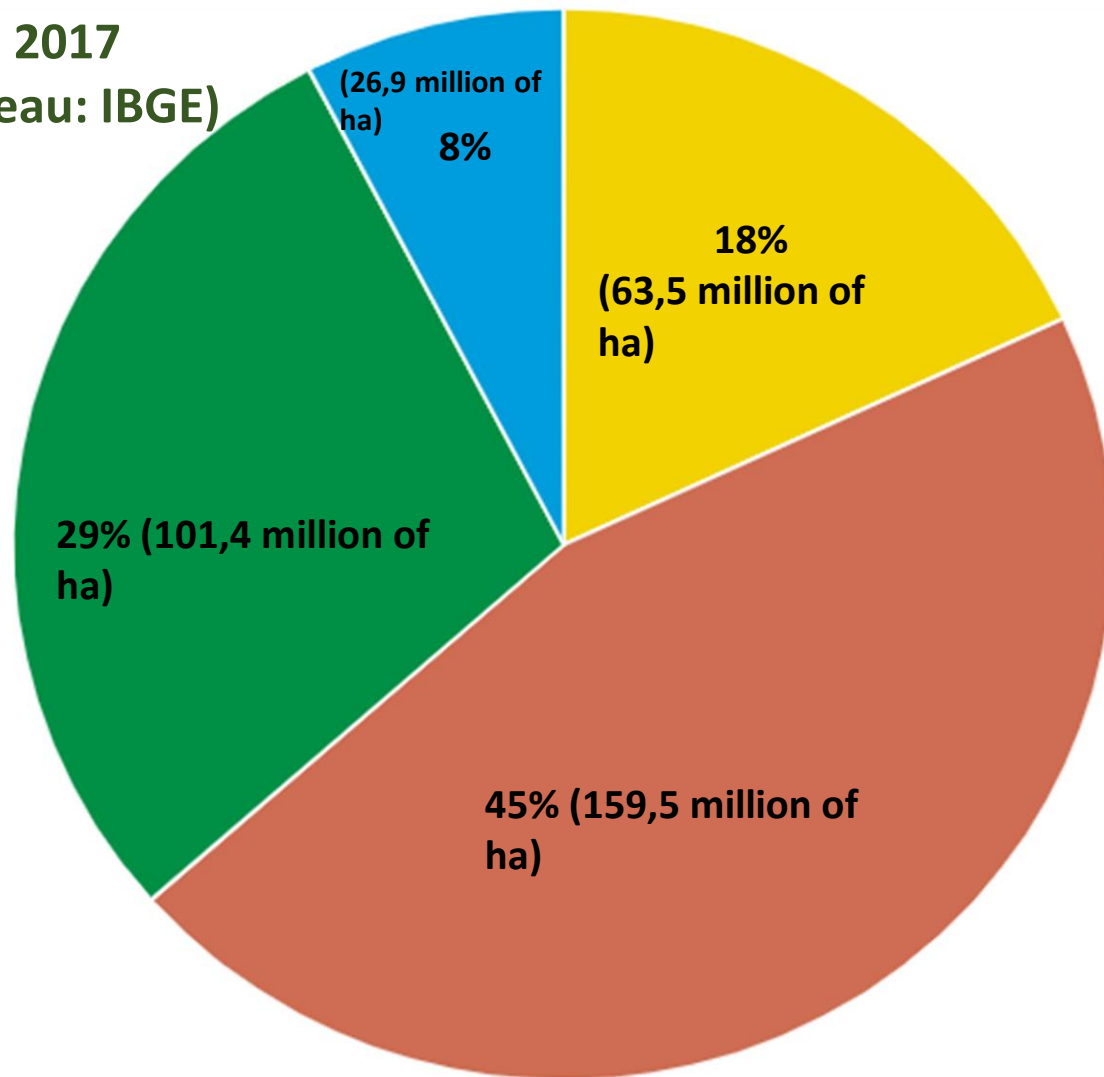
CCAB. Nov. 18th, 2019





**1. Exploration of
Agriculture and
Livestock in Brazil**

Agro & Livestock census 2017
(National Statistical Bureau: IBGE)

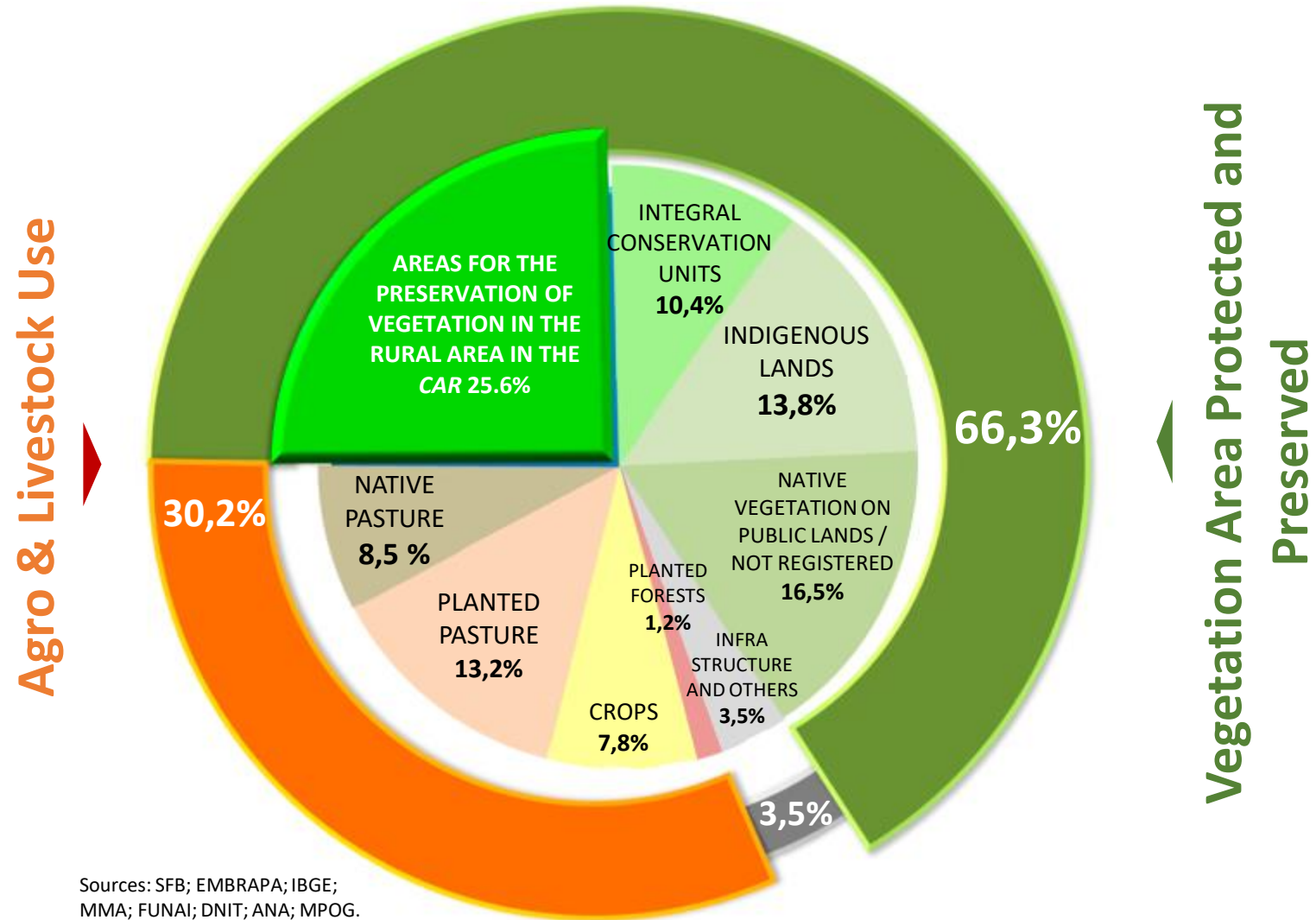


**Pasture + agriculture =
26,2% of Brazil**

Total Area of the Rural Properties: 351,3 million of ha (41,3% of Brazil)

● Crop ● Pasture ● Forest ● Others

Use (%) of Land in Brazil



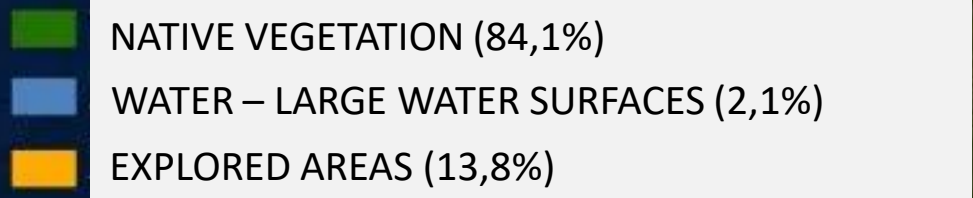
Sources: SFB; EMBRAPA; IBGE; MMA; FUNAI; DNIT; ANA; MPOG.

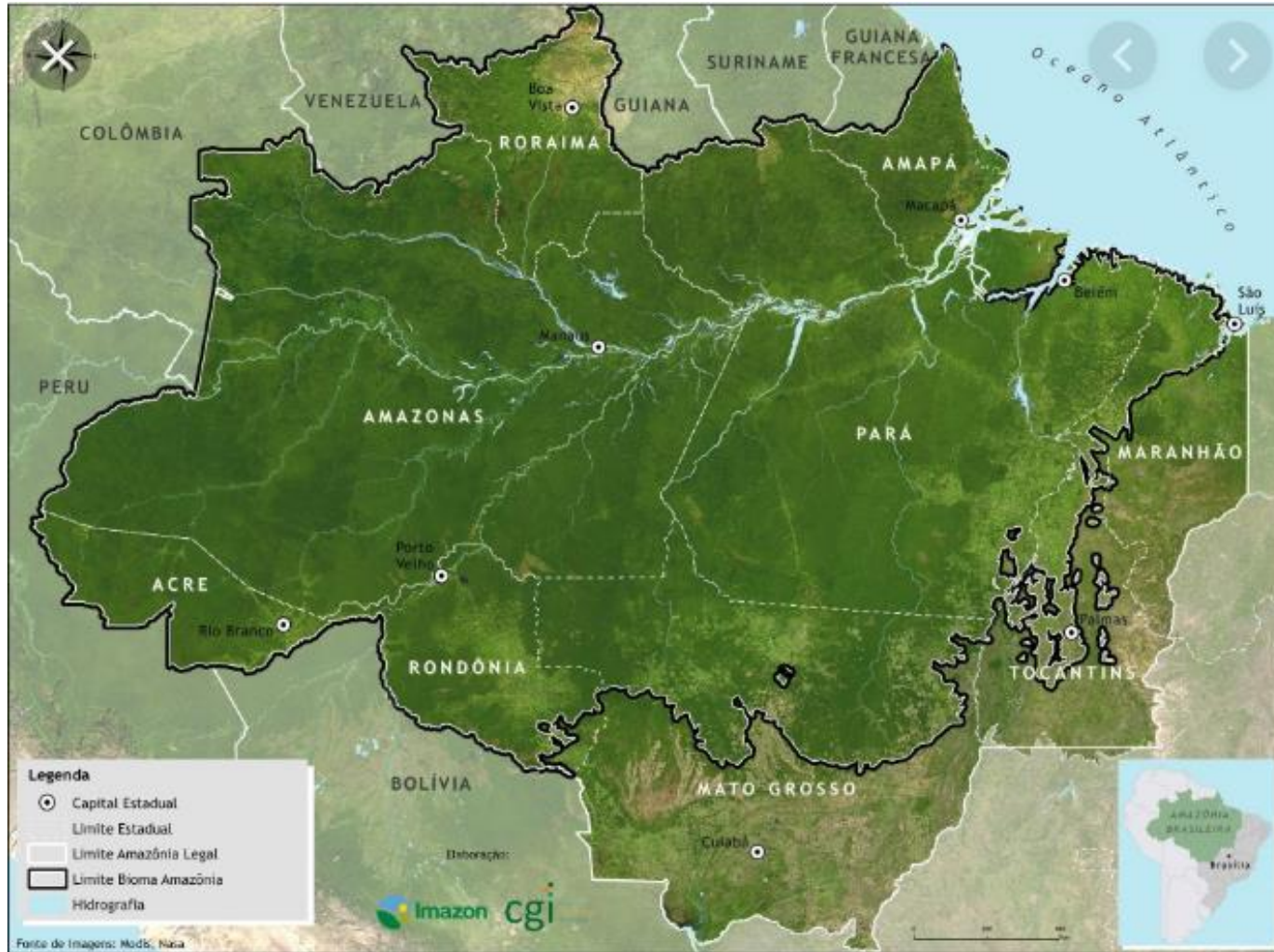


2. Exploration of Agriculture & Livestock in Amazonia

353,3 MILLION OF HECTARES OF NATIVE VEGETATION

84,1% OF THE AMAZONIA BIOME





Amazonia Biome

4,2 million Km²
(49,4% Brasil)

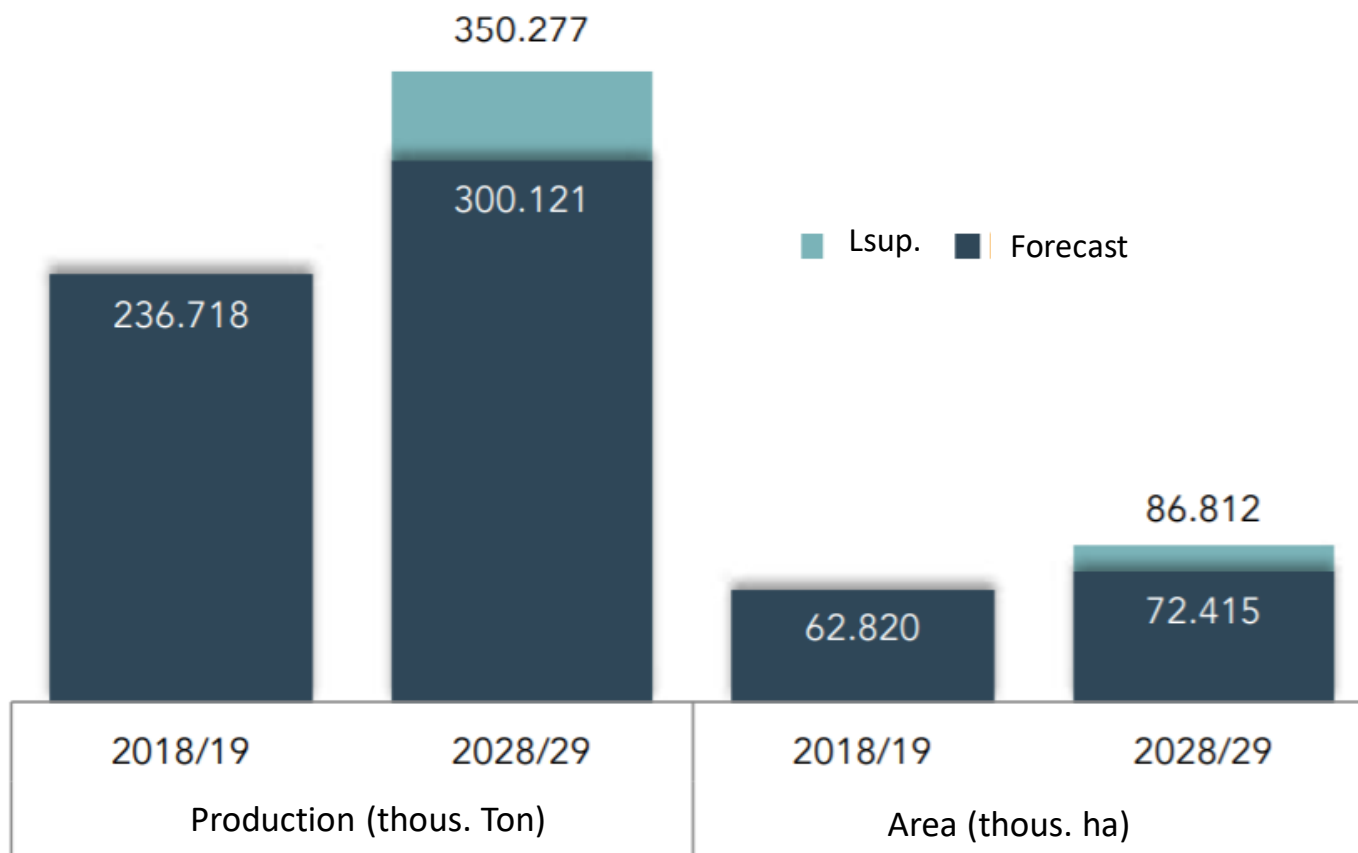
Legal Amazonia

5,2 million Km²
(61,2 % Brasil)

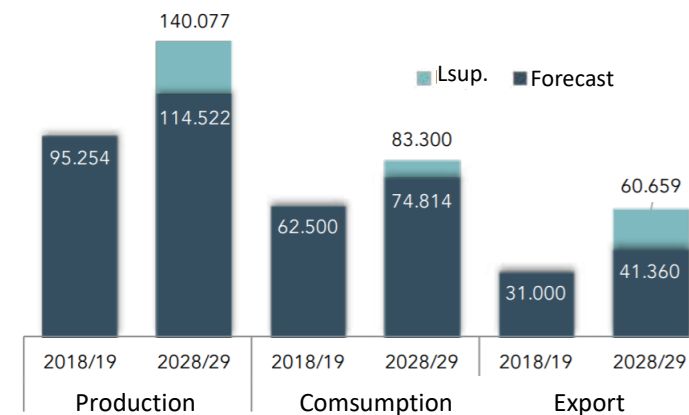


**3. Growth potential of the
Brazilian Agro**

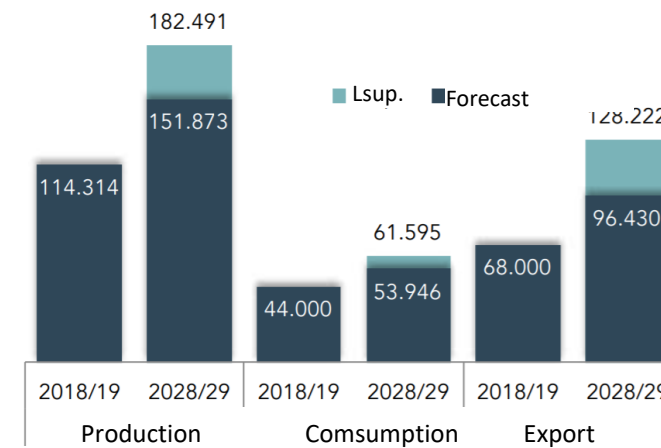
PRODUCTION AND PLANTED AREA OF GRAINS



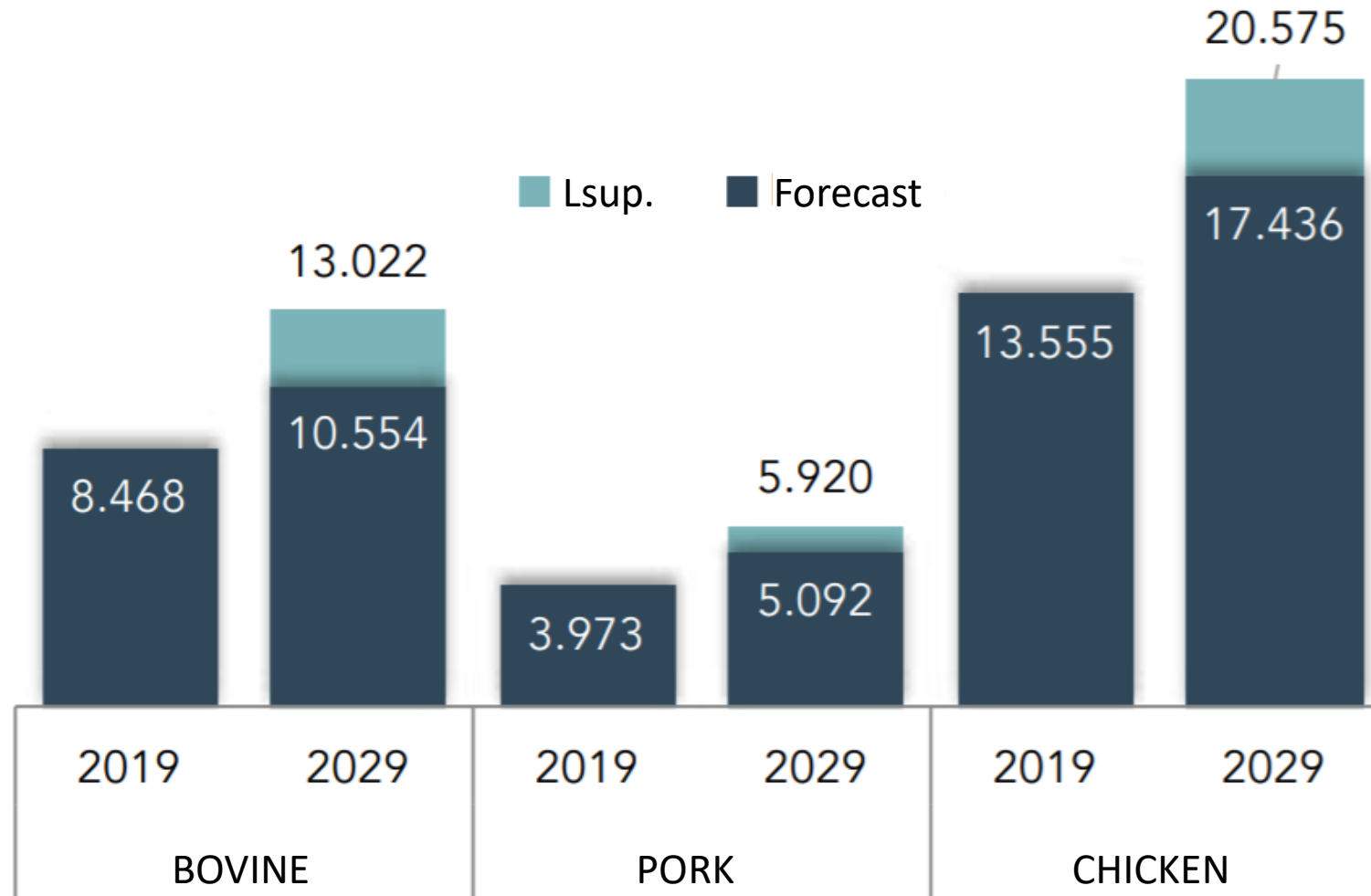
PRODUCTION, CONSUMPTION AND EXPORT OF MAIZE (thous. ton.)



PRODUCTION, CONSUMPTION AND EXPORT OF SOYBEANS (thous. ton.)

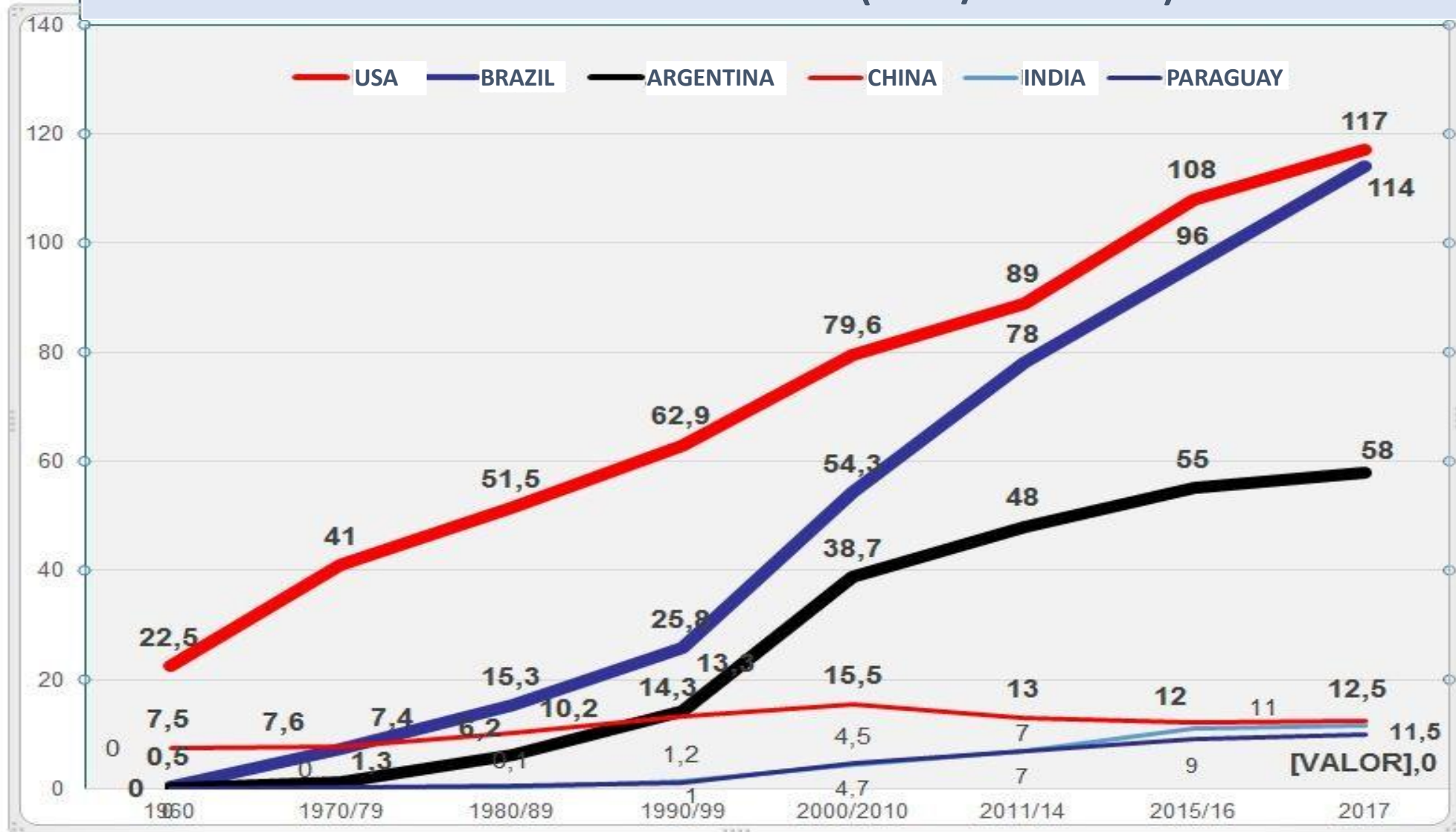


MEAT PRODUCTION (Thousd. Ton.)



SOURCE: CGAPI/DFI/SPA/MAPA and SIRE/EMBRAPA

LARGE GLOBAL PRODUCERS OF SOYBEANS (1960/2017 – Mt)



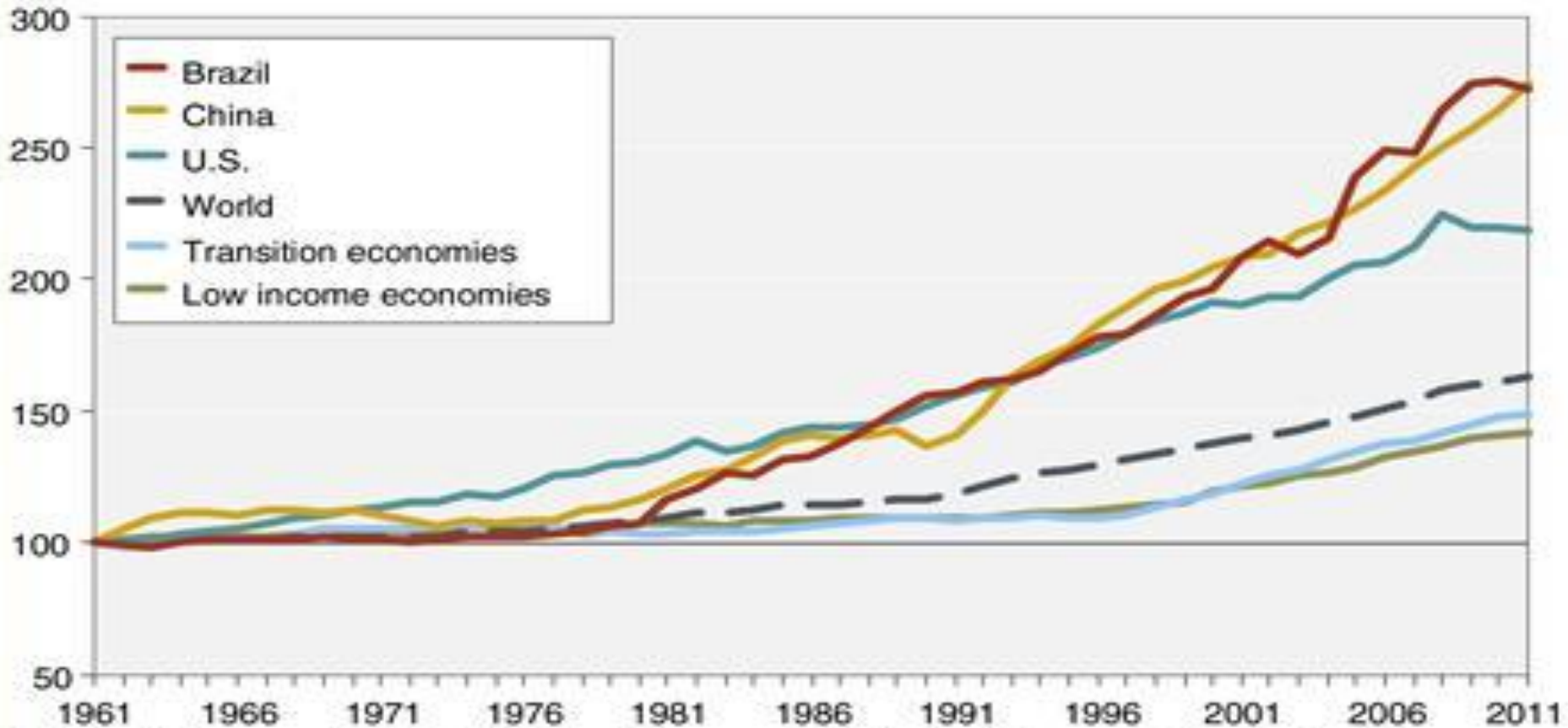
Source: Agrolink Consulting



4. Brazilian Agro Productivity

Agricultural productivity (measured as total factor productivity) growth for selected countries/country groups, 1961-2011

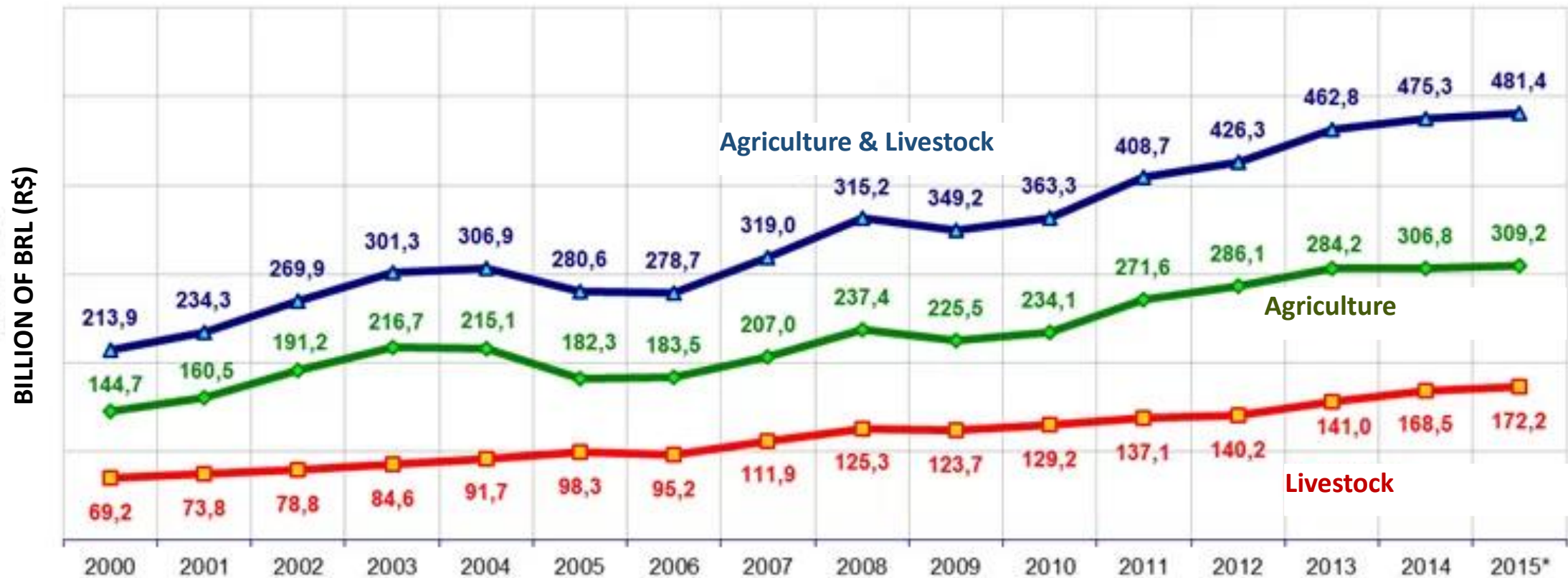
Index (1961 = 100)



Note: Total factory productivity (TFP) takes into account all of the land, labor, capital, and material resources employed in farm production and compares them with the total amount of crop/livestock output. If total output is growing faster than total inputs, we call this an improvement in TFP.

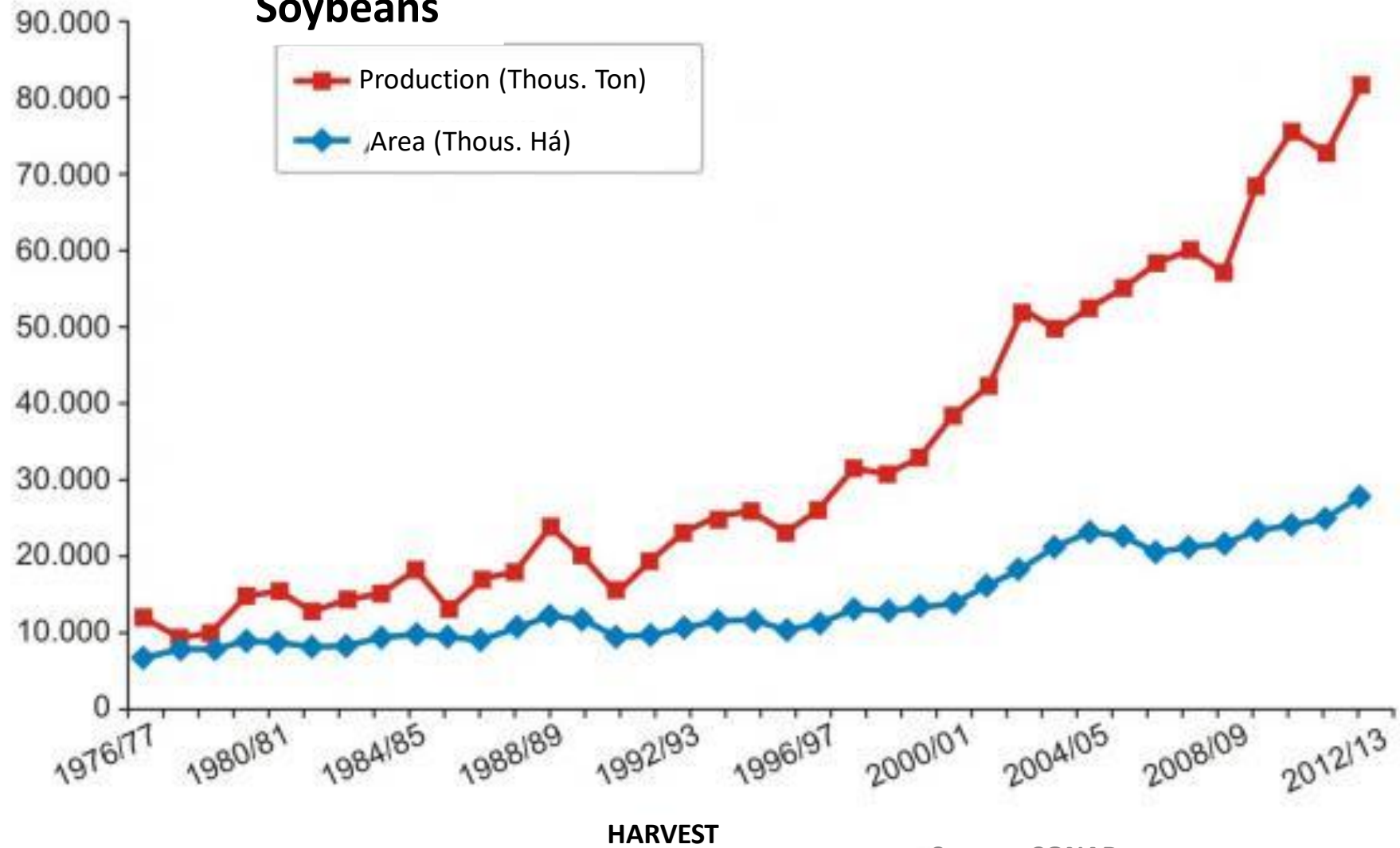
Source: USDA, Economic Research Service, International Agricultural Productivity data product.

BRAZIL: GROSS VALUE OF AGRICULTURAL PRODUCTION



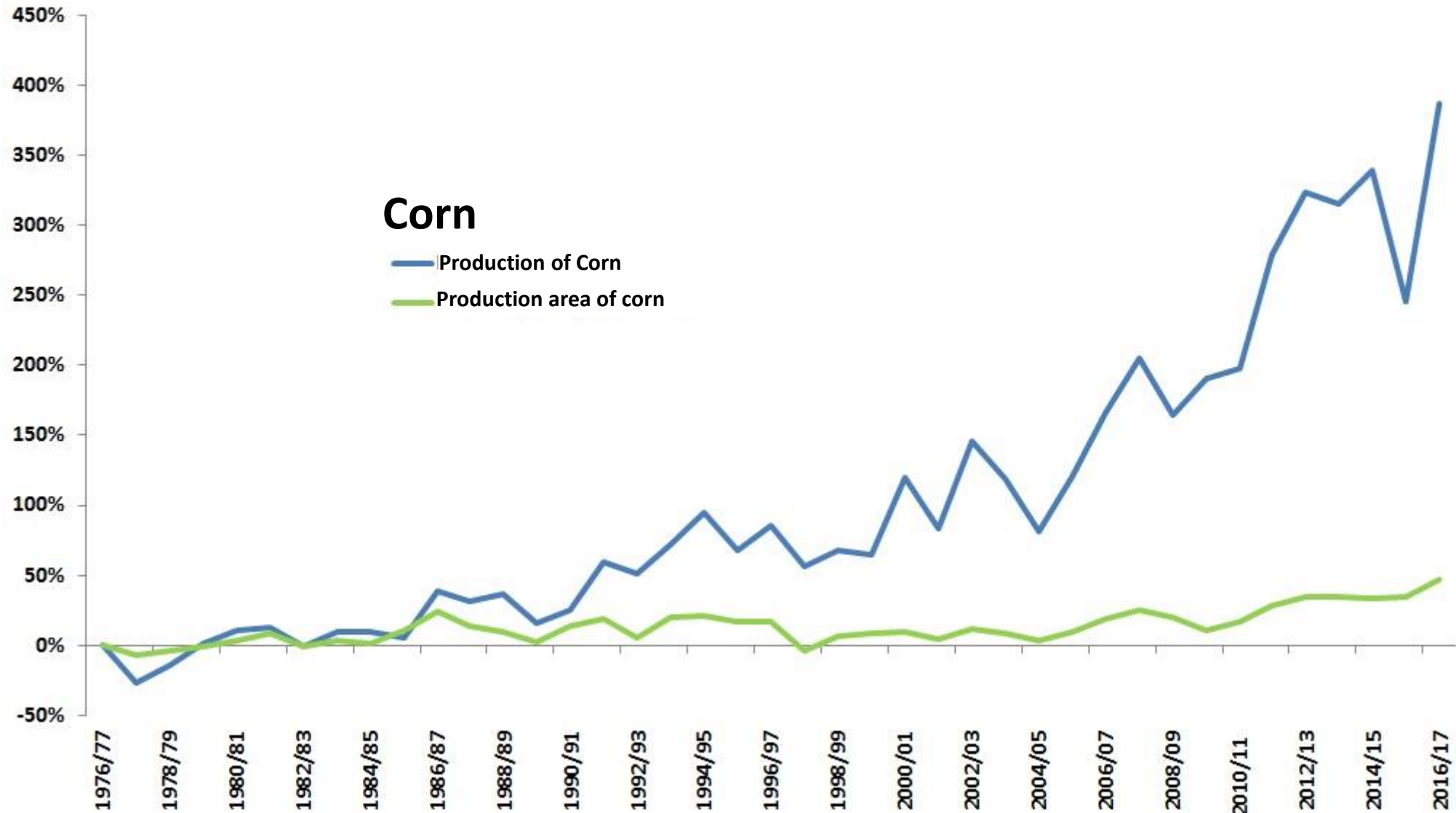
Source: IBGE/FGVDADOS/CEPEA/Esalq/USP/Conab. Done by SPA/MAPA

Soybeans



Source: CONAB

ACCUMULATED PERCENTAGE EVOLUTION OF PRODUCTION AND CULTIVATED AREA OF CORN, IN THE LAST 40 YEARS



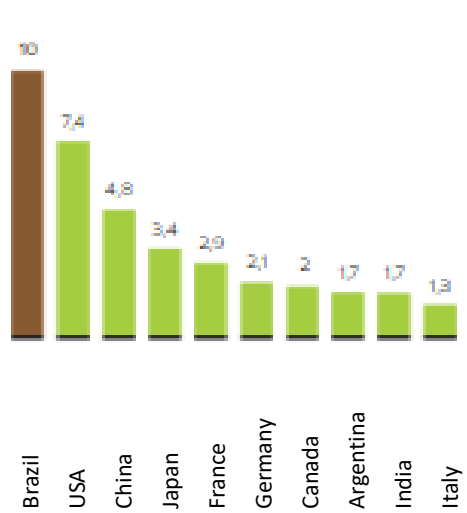


**5. Pesticide usage in the
Brazilian Agro**

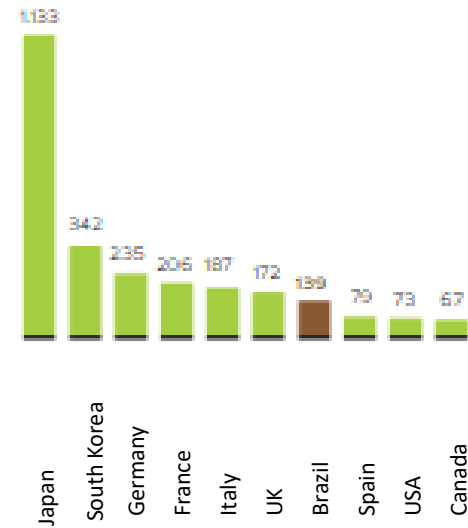
Pesticides in the World

A comparison of usage in Brazil and in the major global markets, in 2013

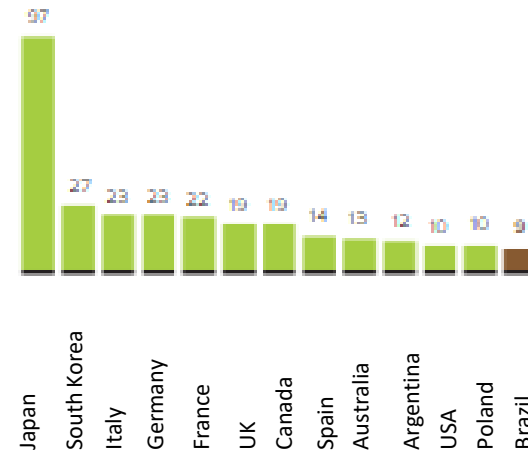
Main Consumers
IN US\$ Billion



Pesticide per Cultivated Area
IN US\$/ha

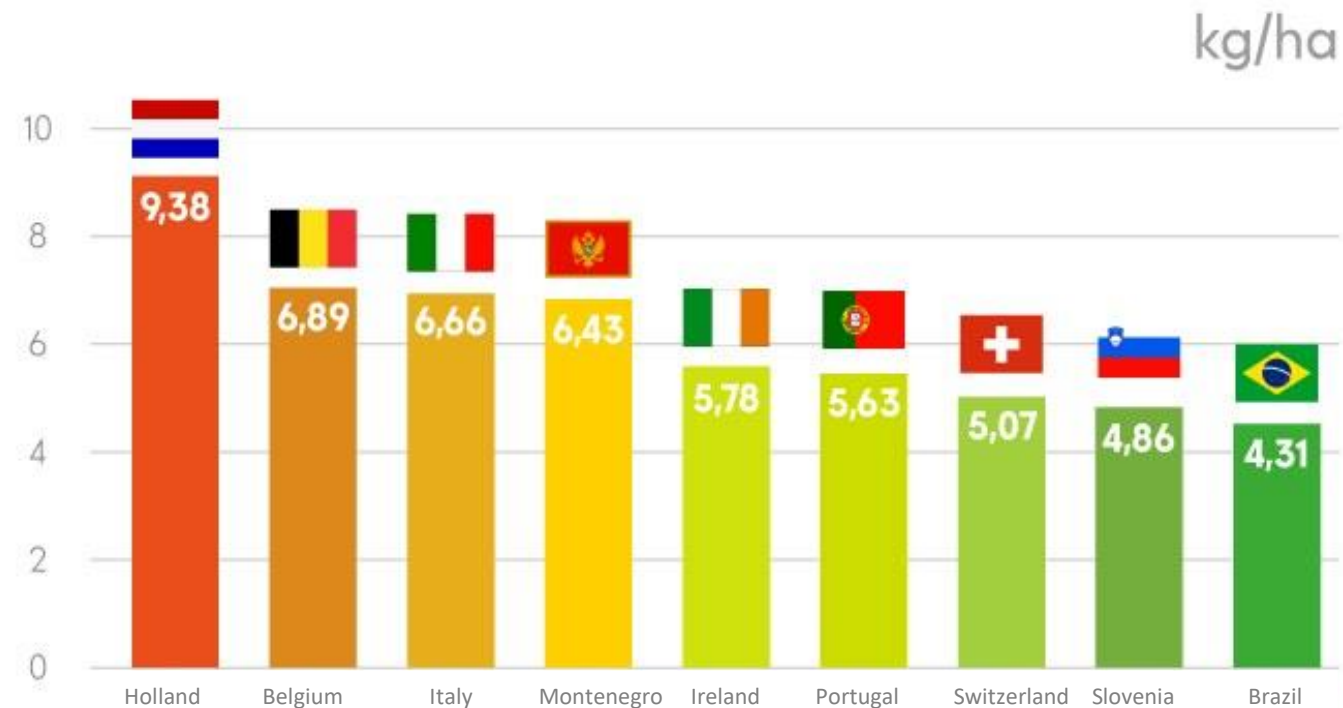


Agrochemicals per Agricultural Production
In US\$/ton



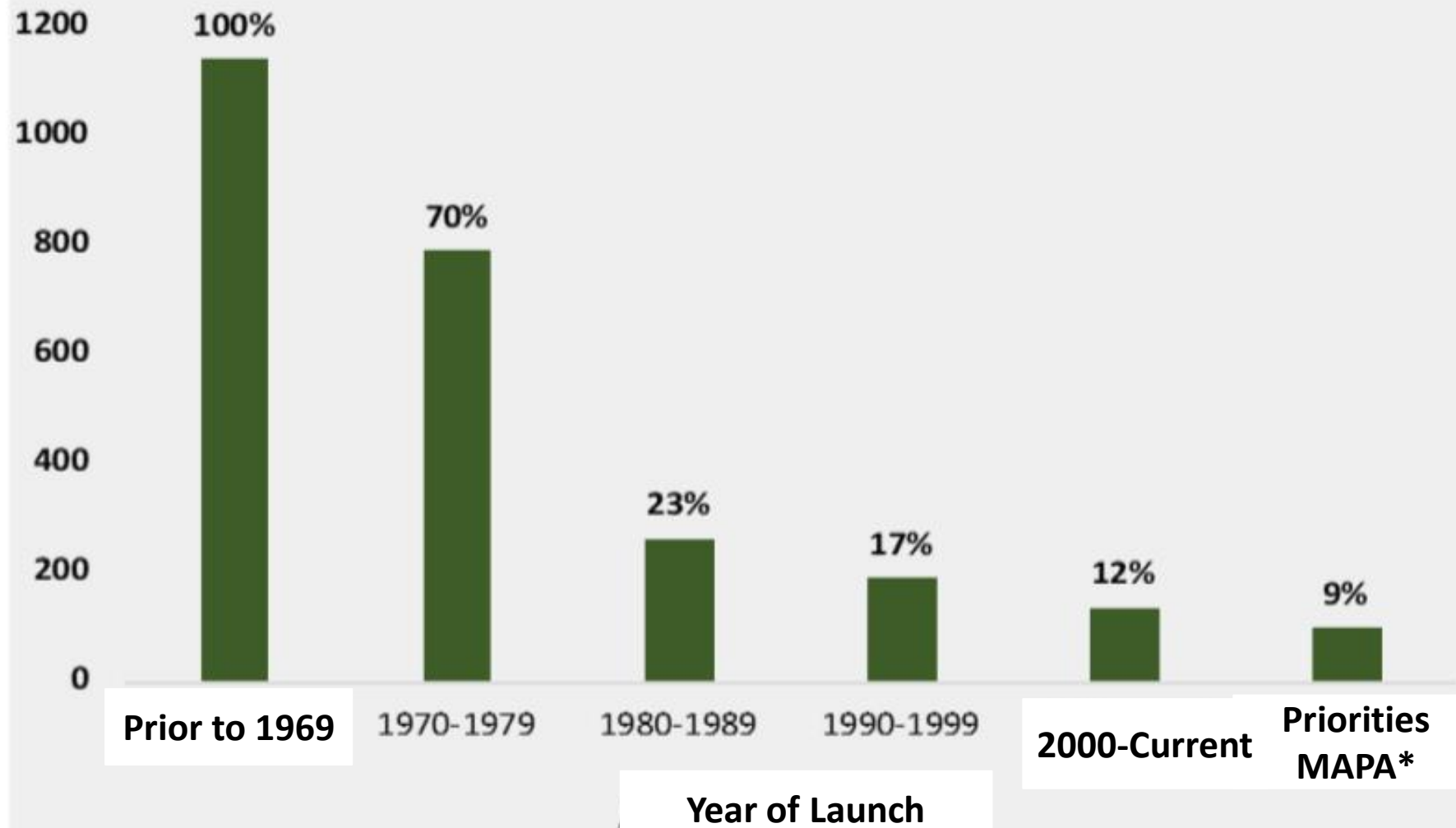
Sources: EDIVALDO VELNI AND CAIO CARBONARI FROM UNESP, BASED ON THE DATA OF FAO AND THE CONSULTING FIRM PHILLIPS MCDUGALL

Ranking of FAO about the usage of pesticides per cultivated hectare



Source: FAO

Average Dose (g/ha)



*Ministry of Agriculture, Livestock and Sourcing

Source: Caio Carbonari/UNESP-Botucatu

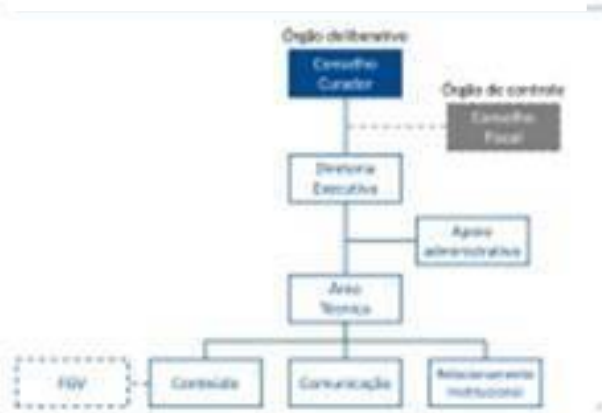
Communication Needs

We need internationally renowned non-Brazilian ambassadors to talk about what we are doing!

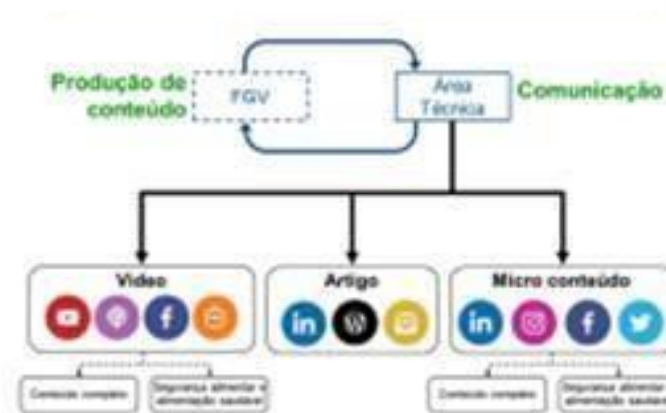
New Law Proposal - PL 6299



Proposal of Organization



Content and Communication





Brazilian Melon, you can trust!

We follow strict requirements of food safety!

We DO Practice SUSTAINABLE AGRICULTURE

Thank you!

Xico Graziano
Nov 18th